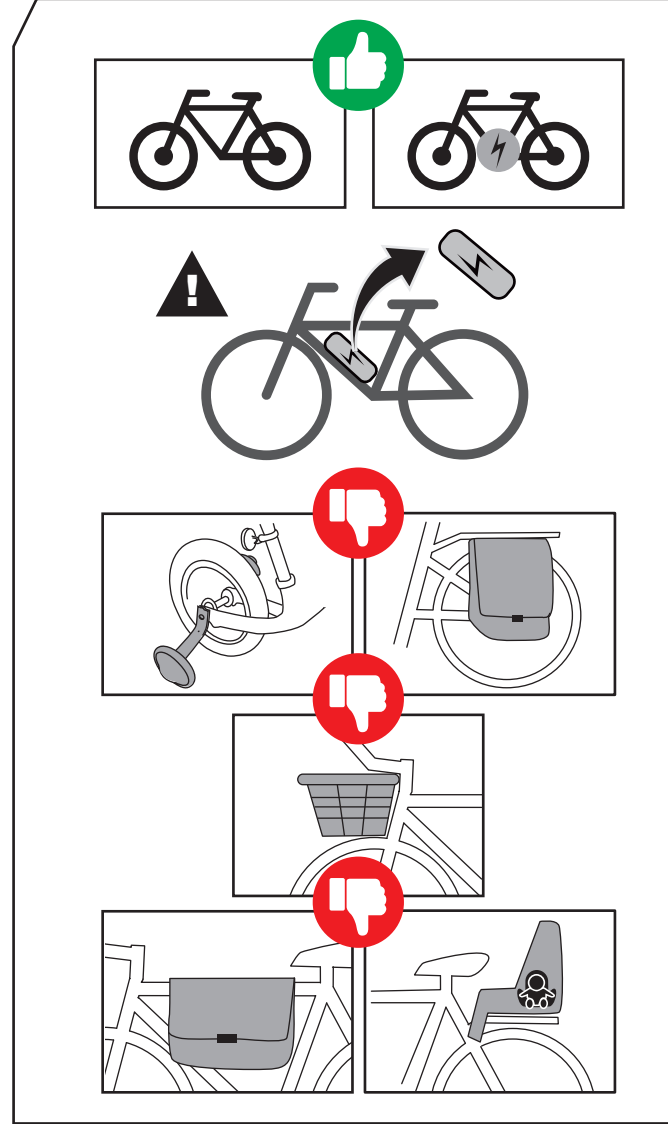
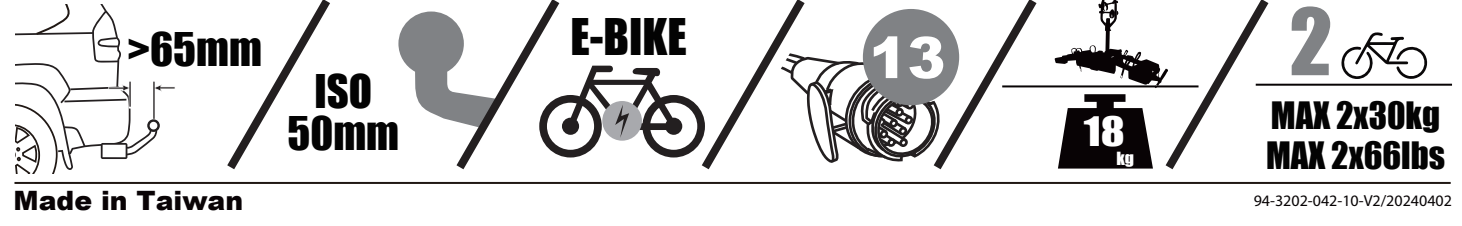


BUZZ RACK

E-SCORPION 2



Max	Weight	Capacity
40 kg	18 kg	22 kg
50 kg		32 kg
60 kg		42 kg
70 kg		52 kg
>80 kg		MAX 60 kg



MAX 60KG E-Bike

2 x 30kg = MAX 60 kg

Max 4"

Wheel base

26" Tire diameter	29" Tire diameter
MAX 136.8cm(53.8")	MAX 138.4cm(54.5")

ACCESSORIES (NOT INCLUDED)

E-RAMP Alu # 47-0116-002-10

E-RAMP steel # 47-0116-003-10

E-RAMP Pro # 47-0116-006-10

CONNECTOR # 47-0100-042-10

13 to 7pin

STEP 1.

x1 x1 Tool

STEP 1.

L&R

STEP 3.

x2 L&R

STEP 2.

L R

STEP 4.

x8 x1

1 2 3 4

STEP 5.

STEP 6.

STEP 9.

XX-XXX-XX

Denmark only 504x120mm

x8

* This tool is not included.

STEP 7.

STEP 8.

x2 M6x70mm

x2

x2

x2

! !

Warning icons: hot surface, no fire, maintenance oil.

STEP 11.

1

2 3 4

ISO 50mm

5 5Nm

6 MAX 37.5Kg (82.5Lbs)

4 3/4" (12cm)

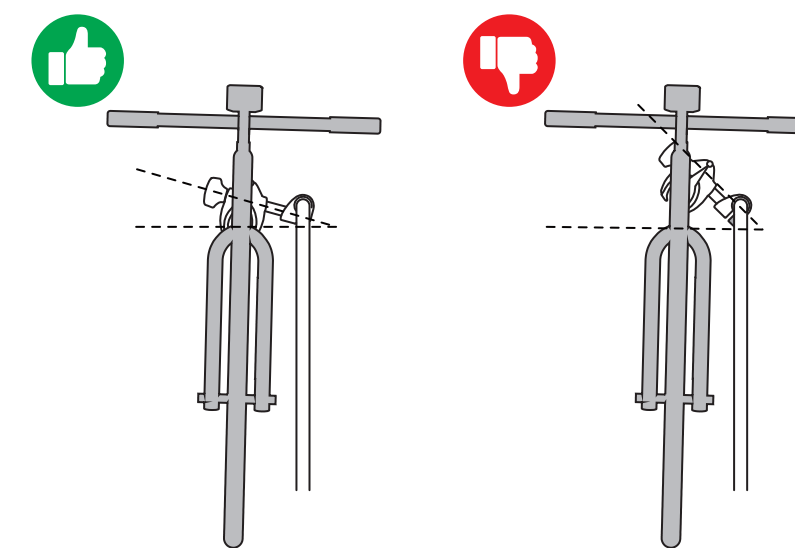
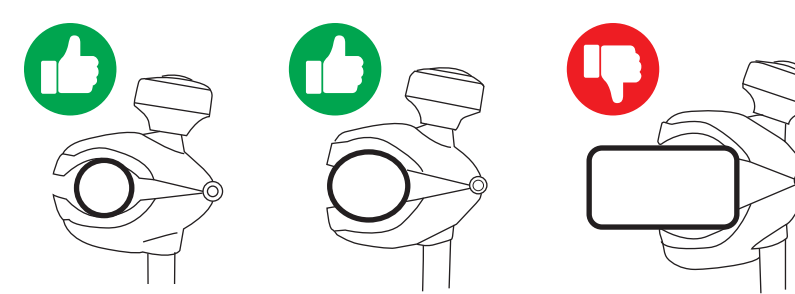
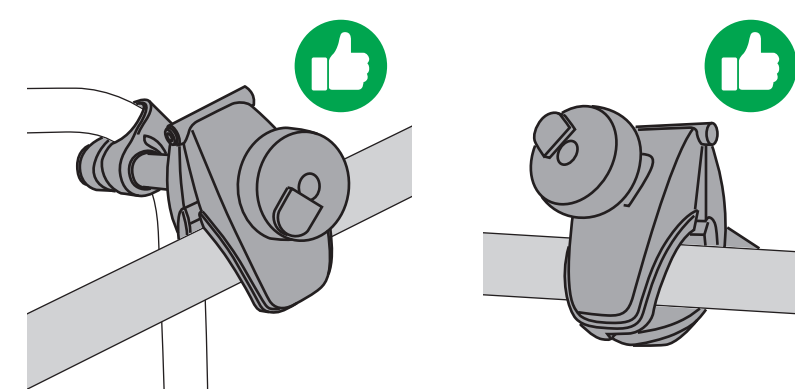
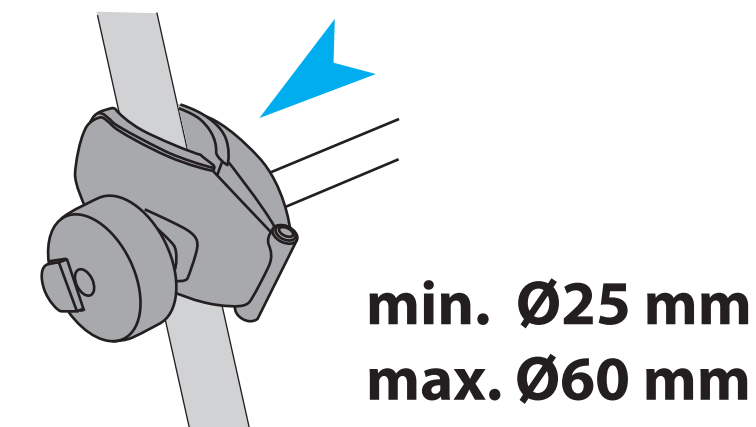
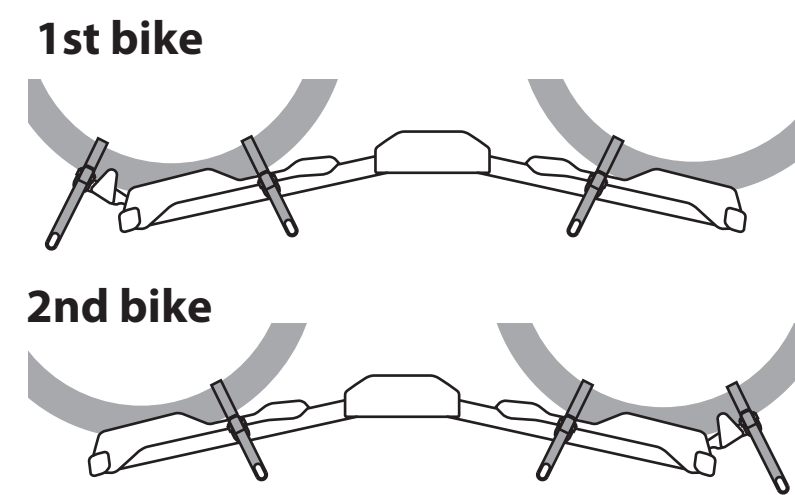
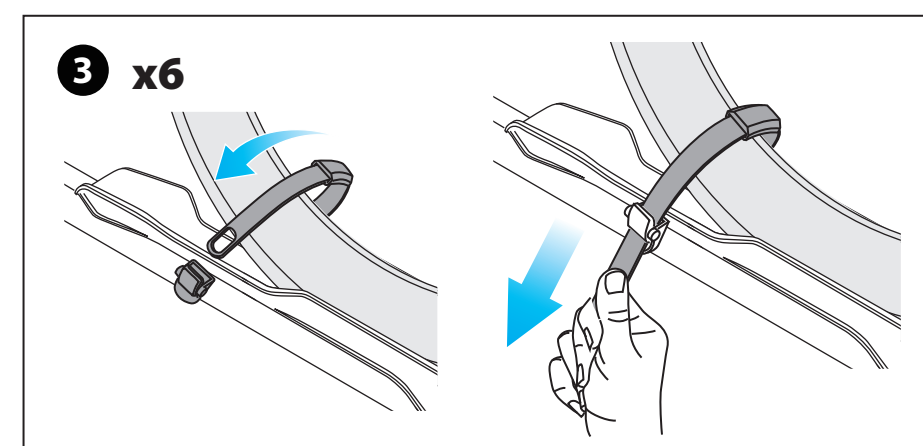
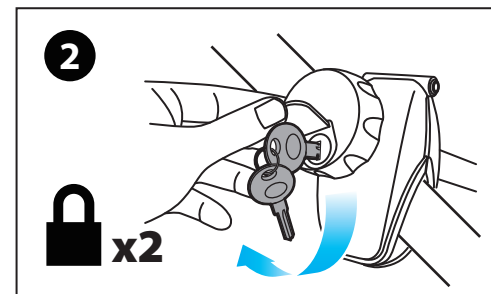
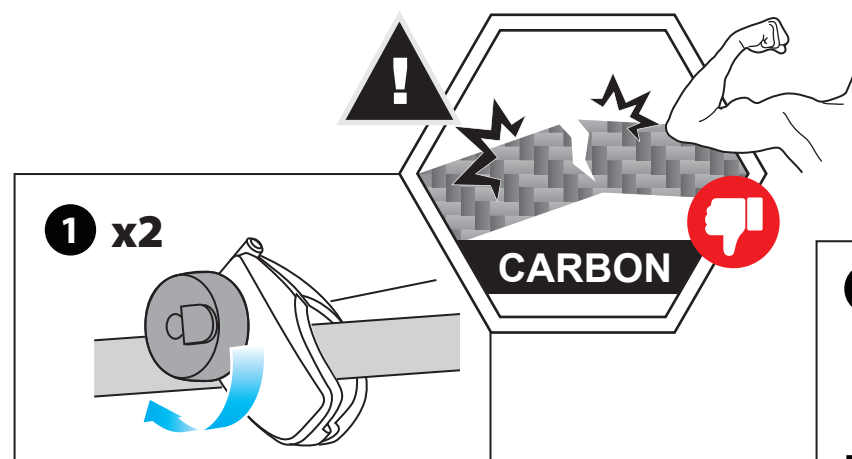
CHECK!

7

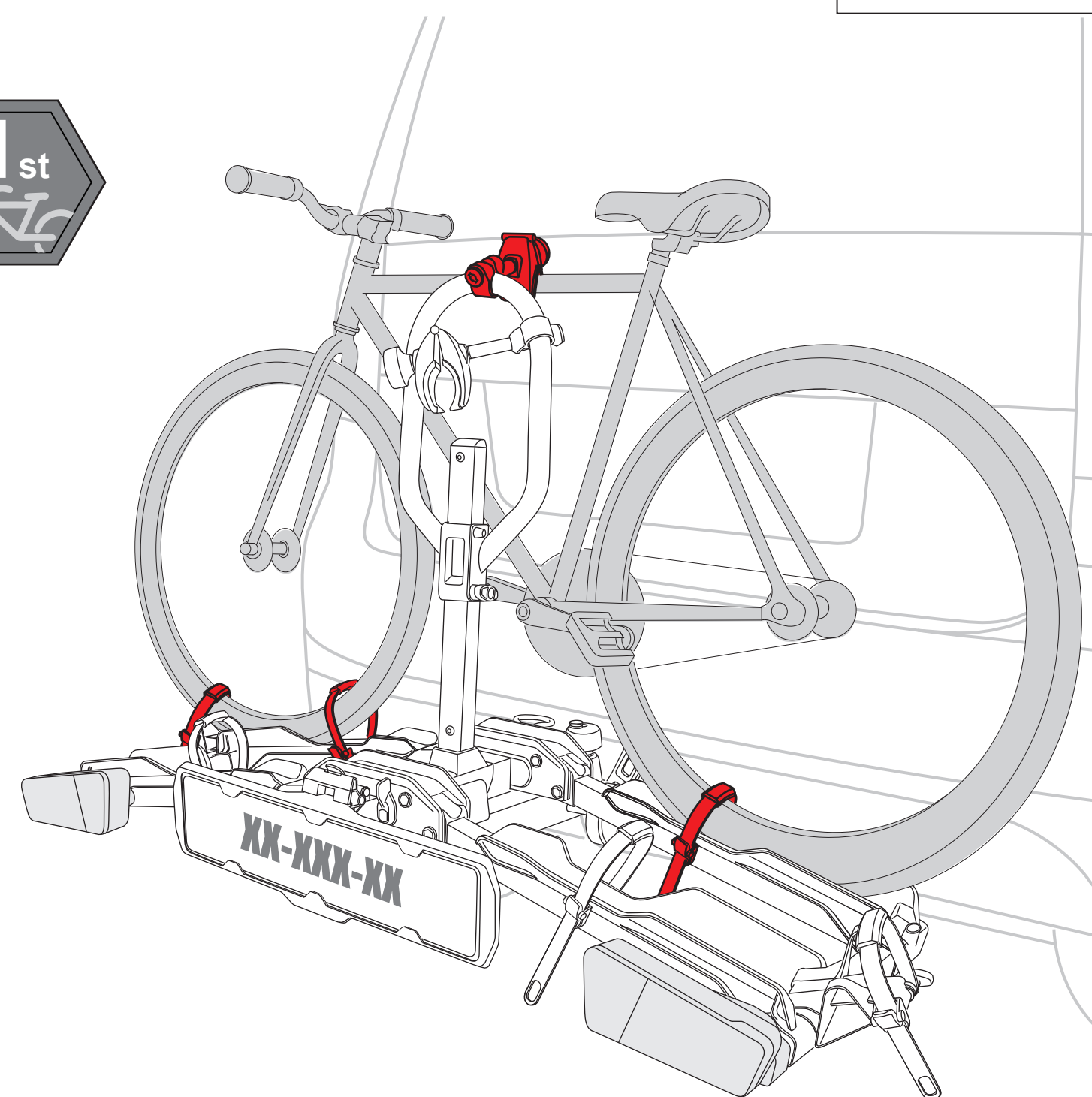
13-pin

7-pin flat AUSTRALIA / NZ

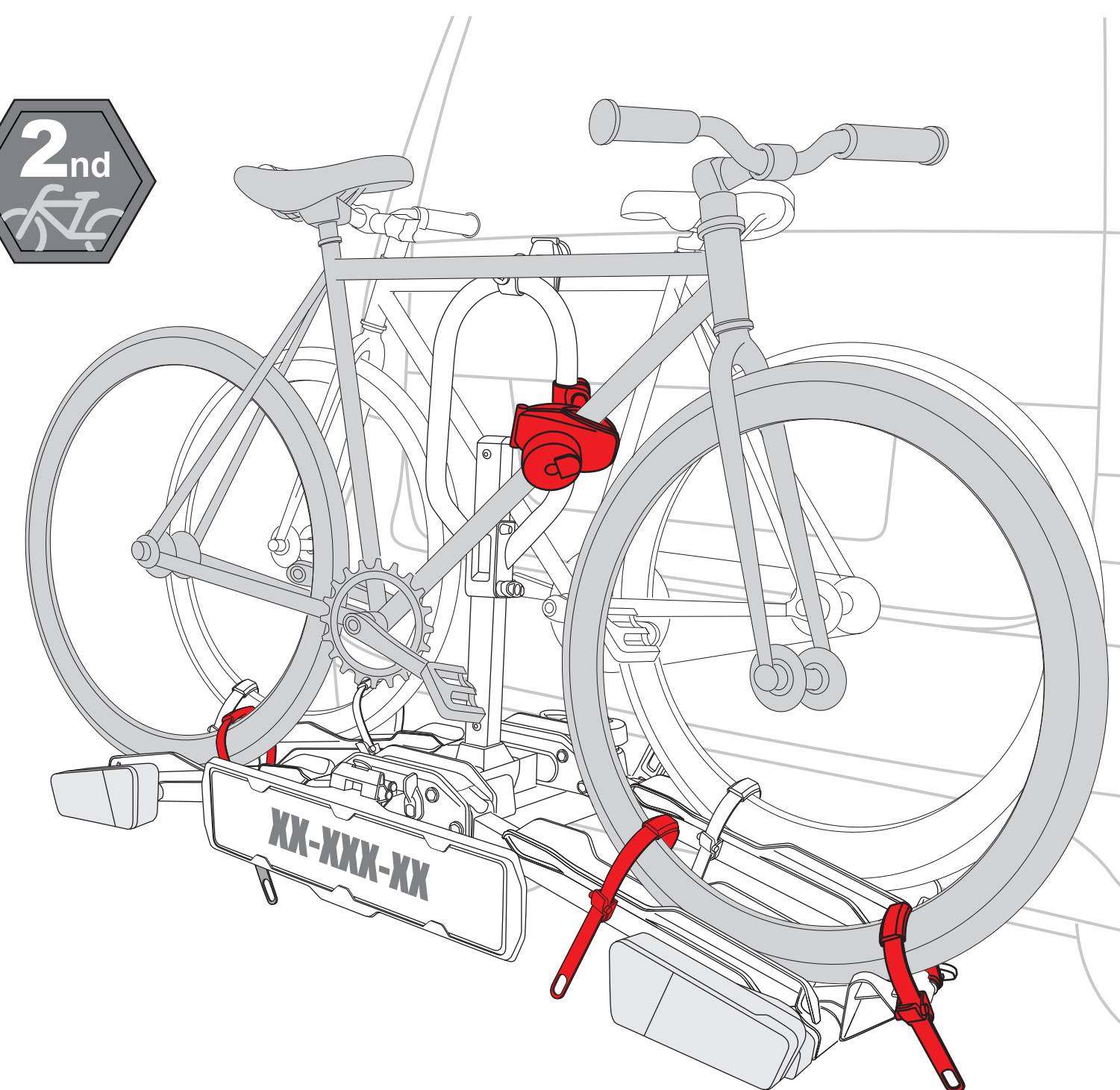
STEP 12.



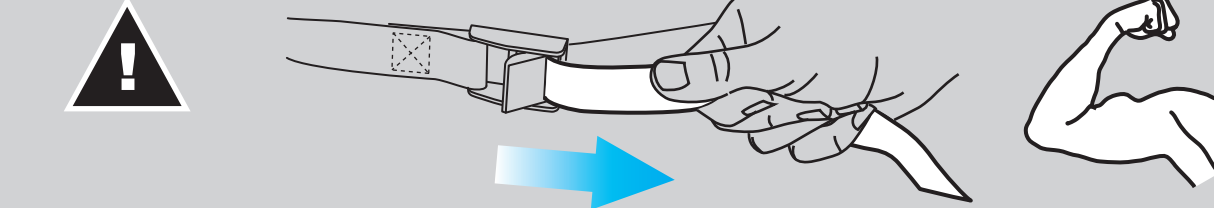
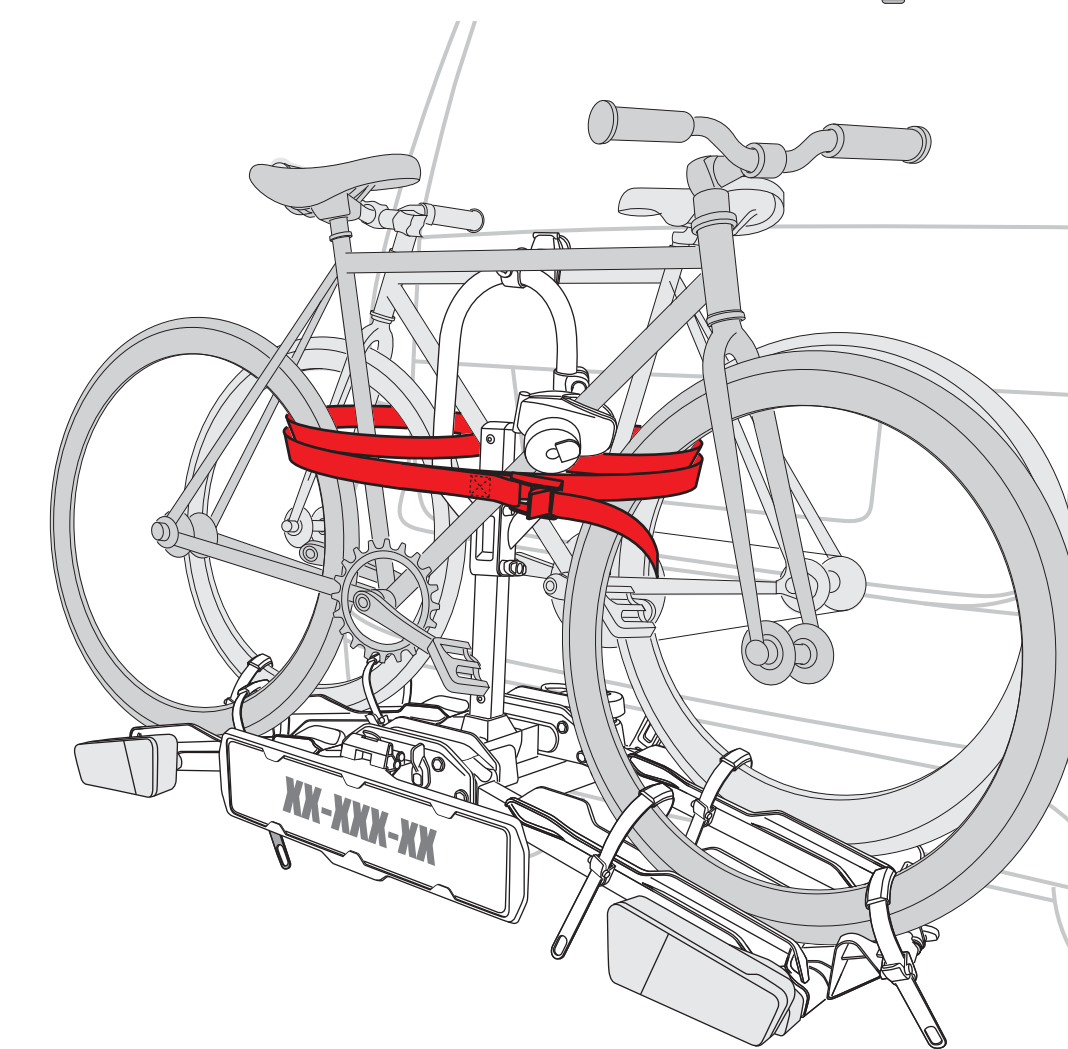
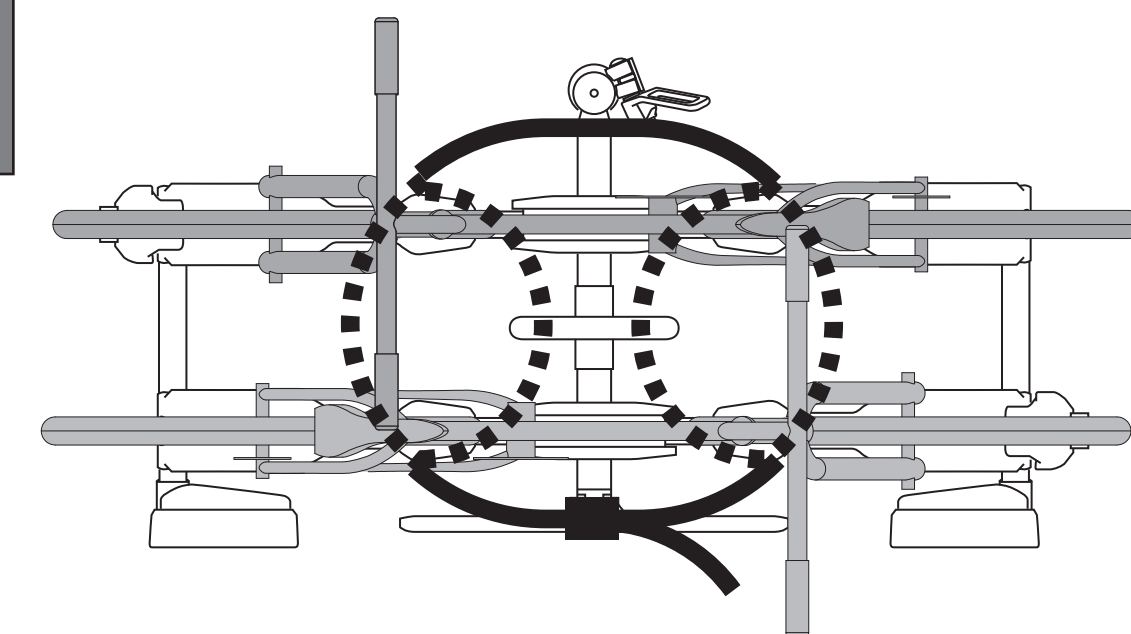
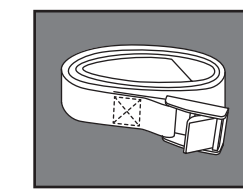
1st



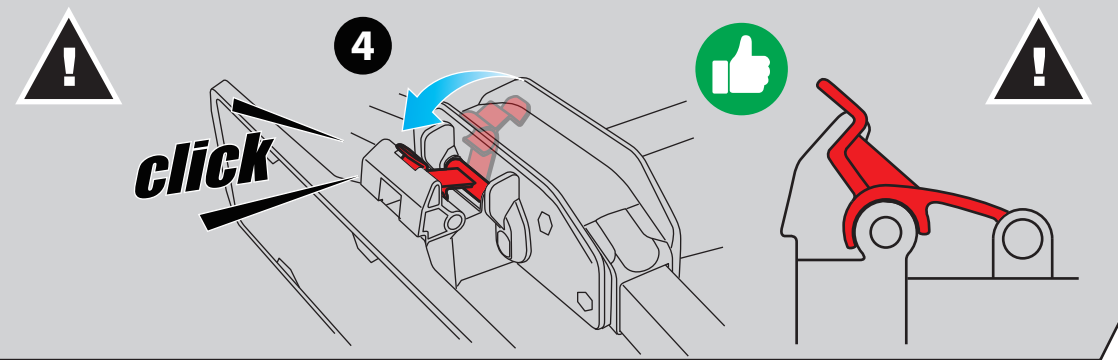
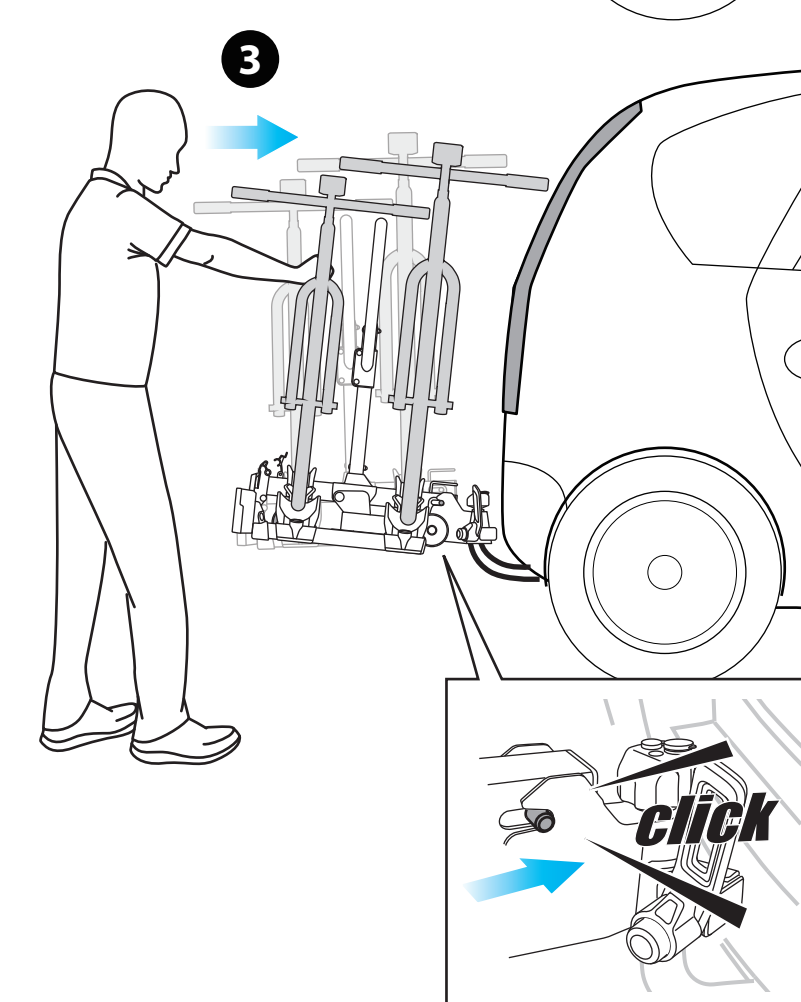
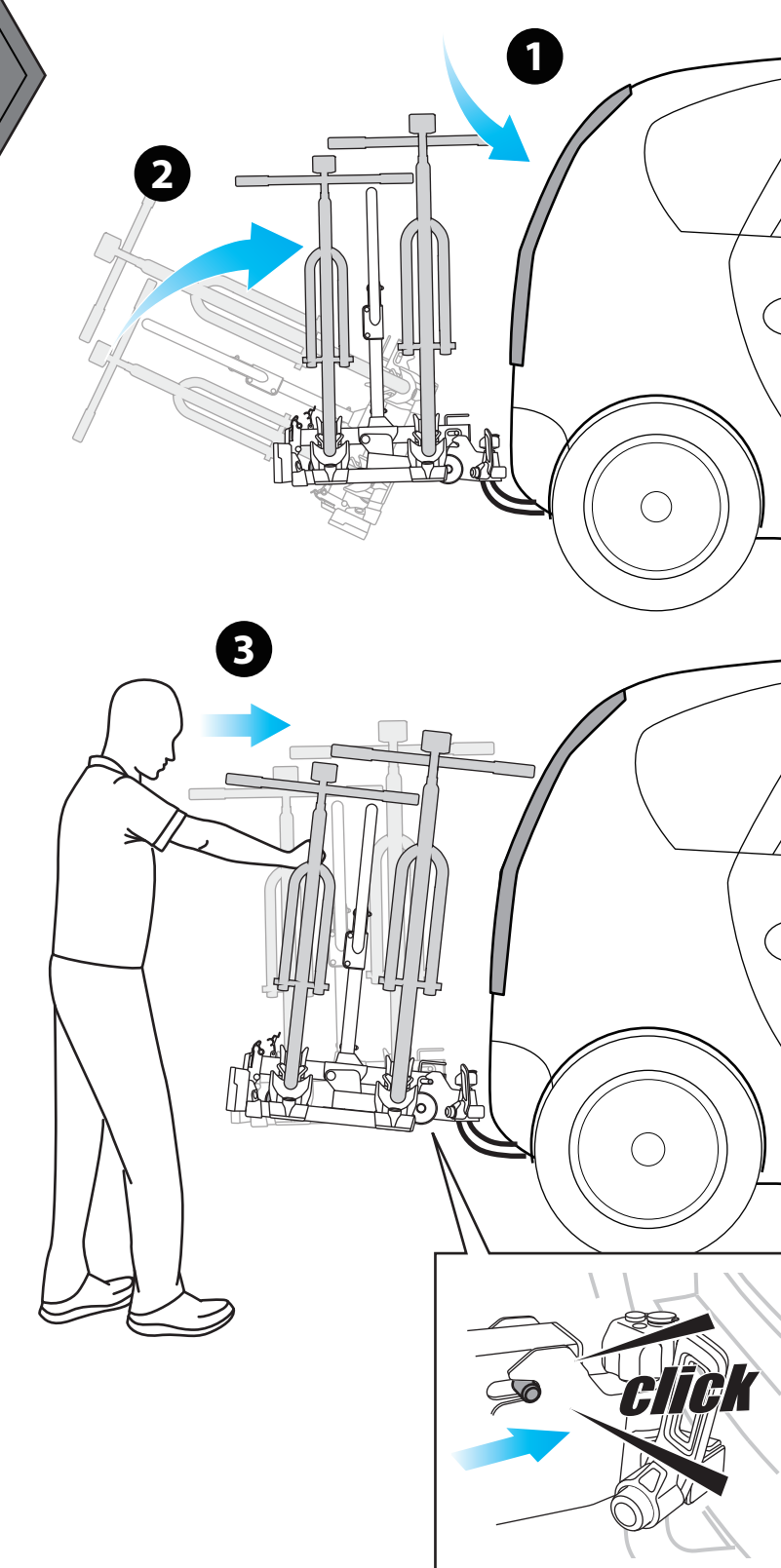
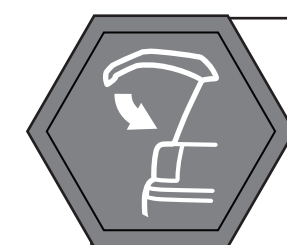
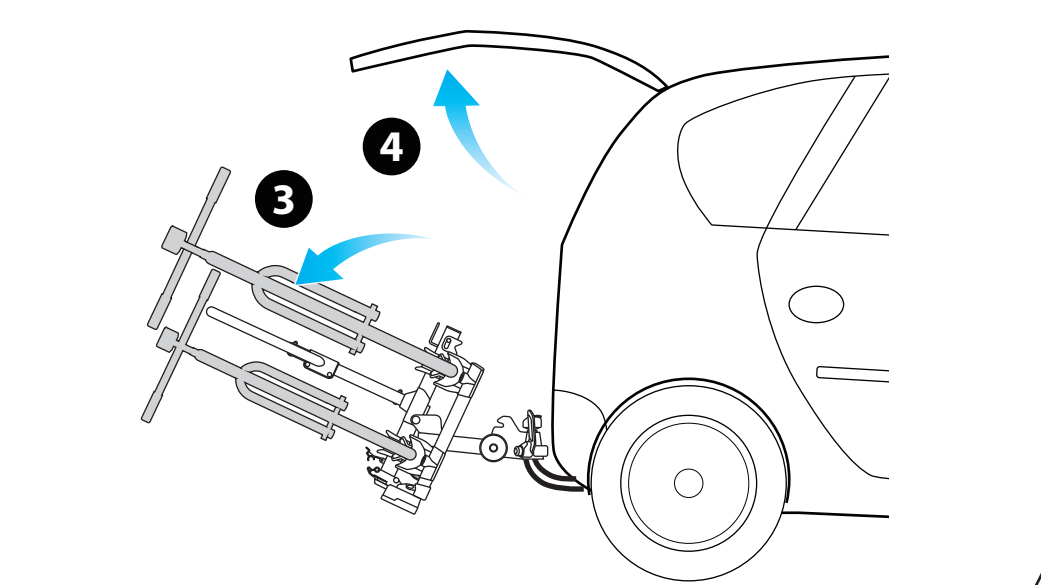
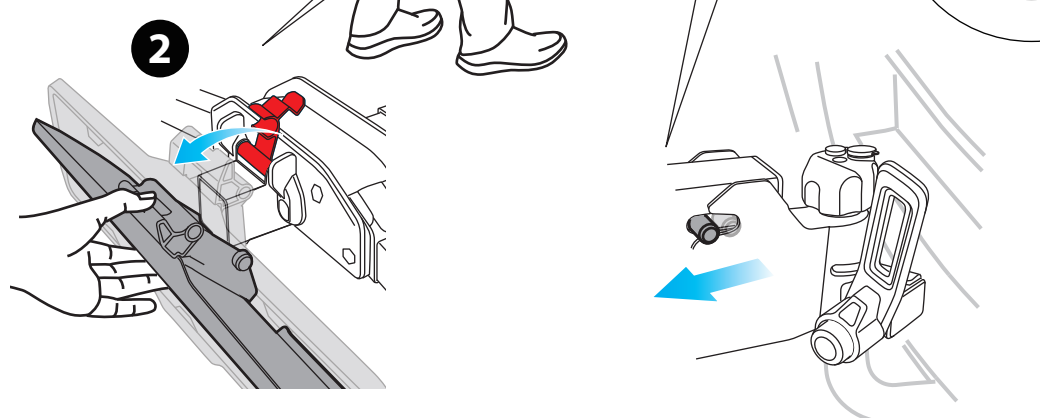
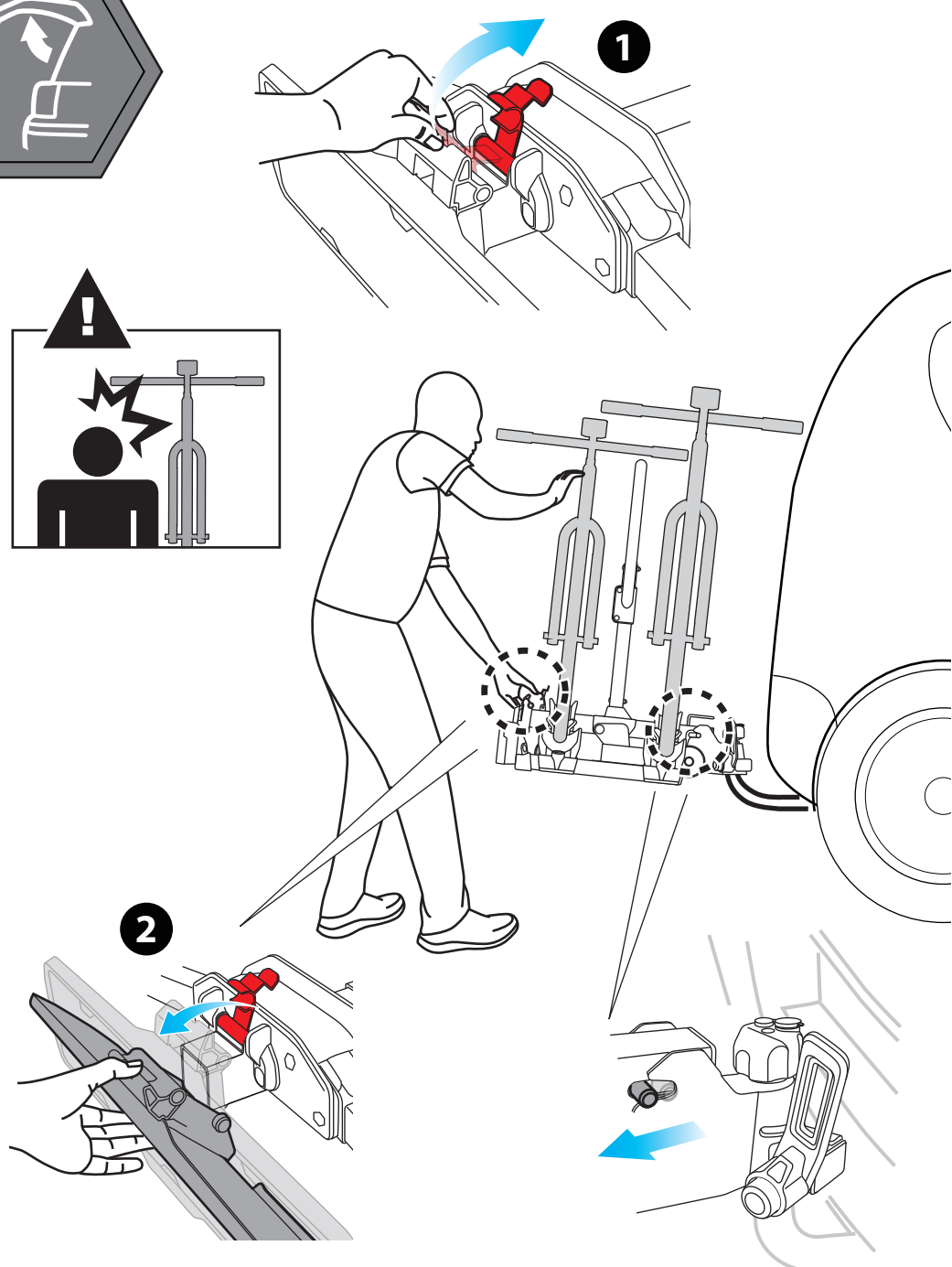
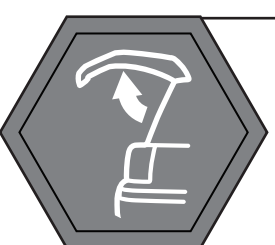
2nd



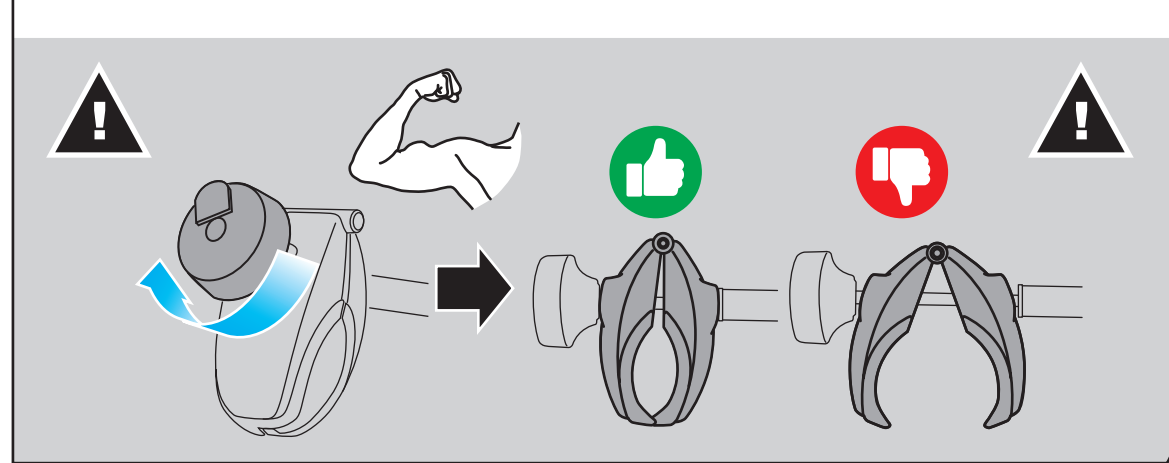
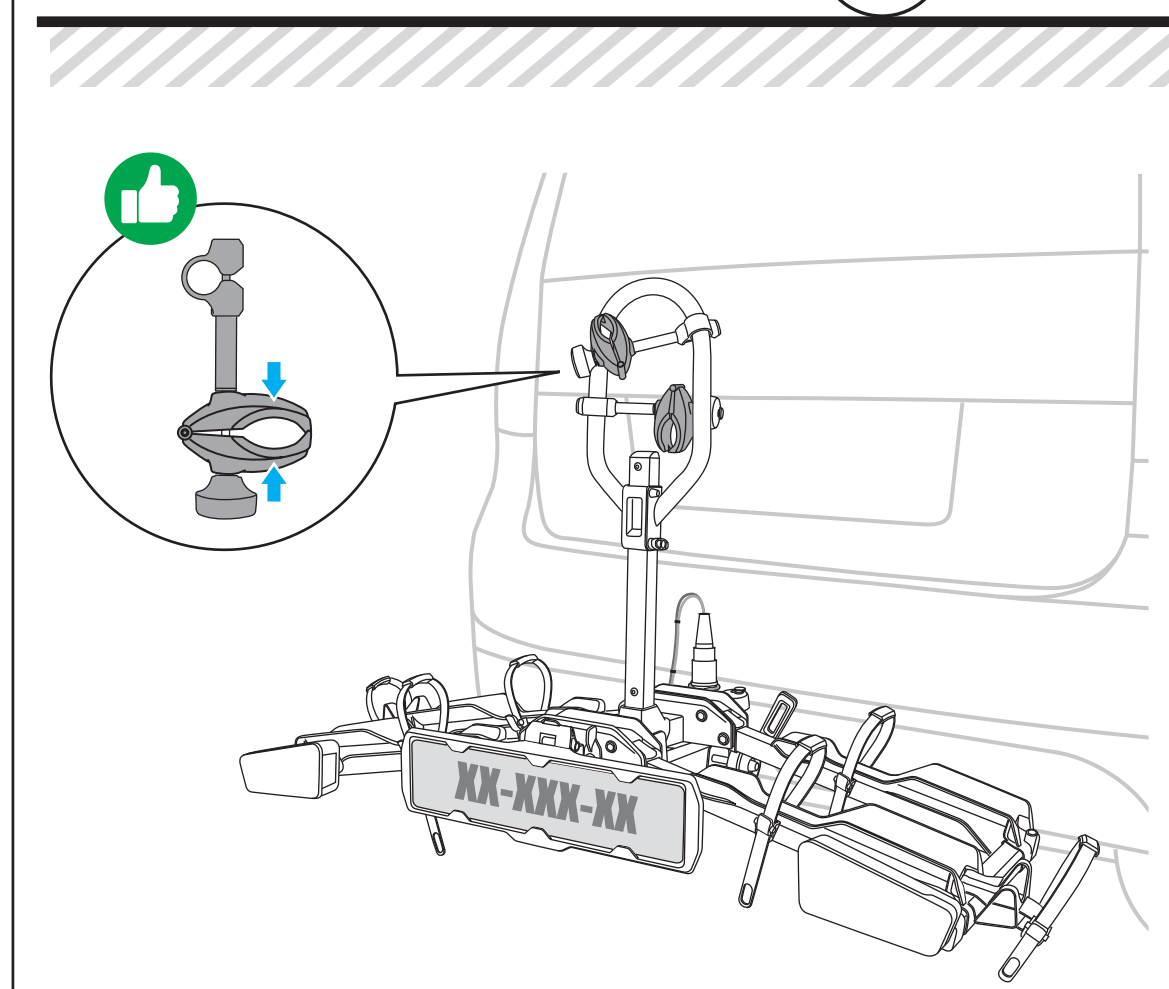
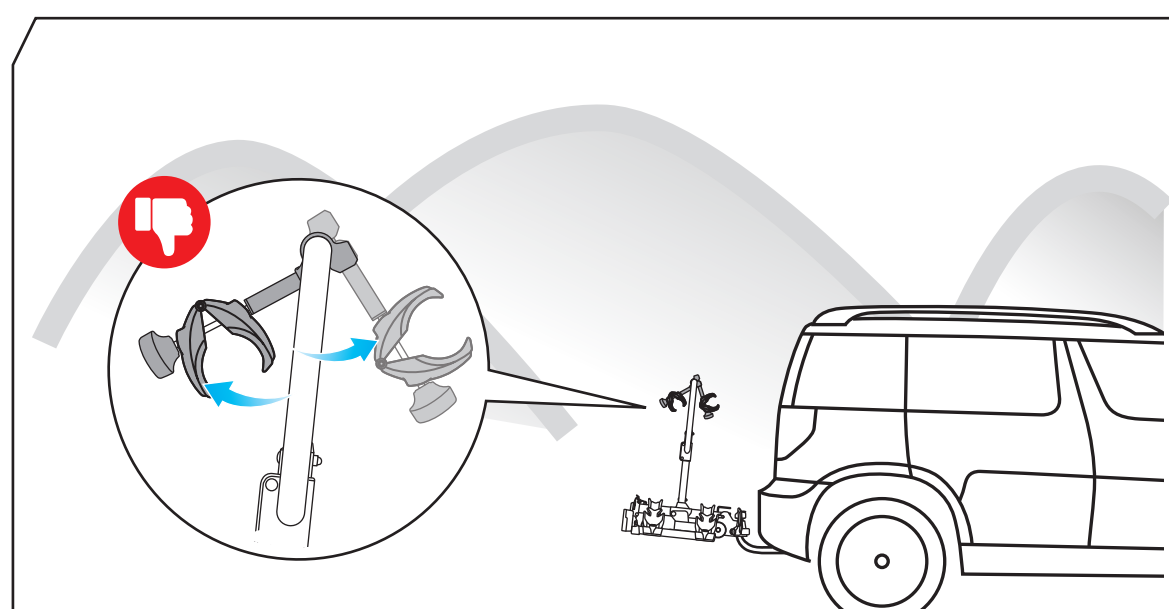
STEP 13.



STEP 14.



STEP 15.



STEP 16.

