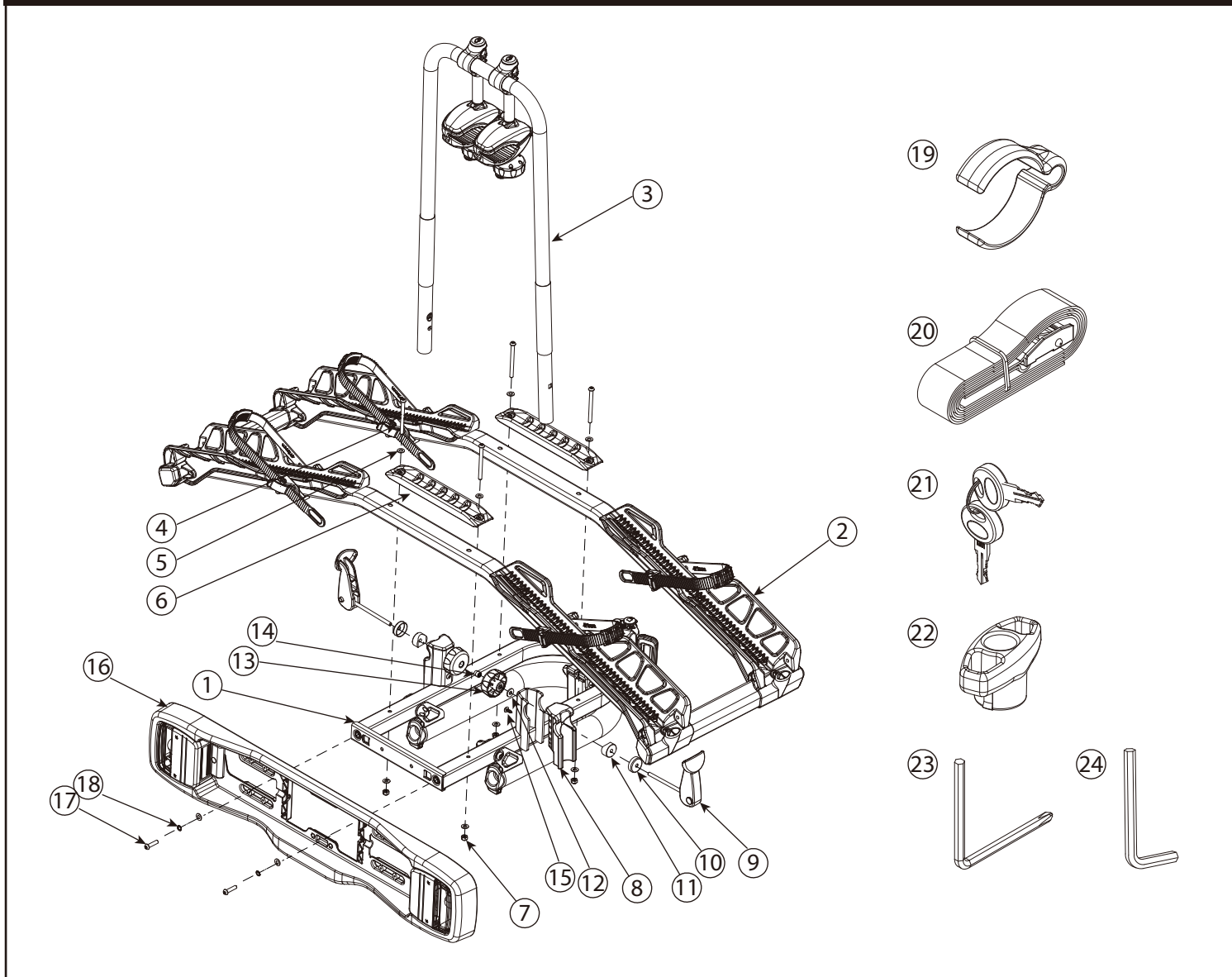
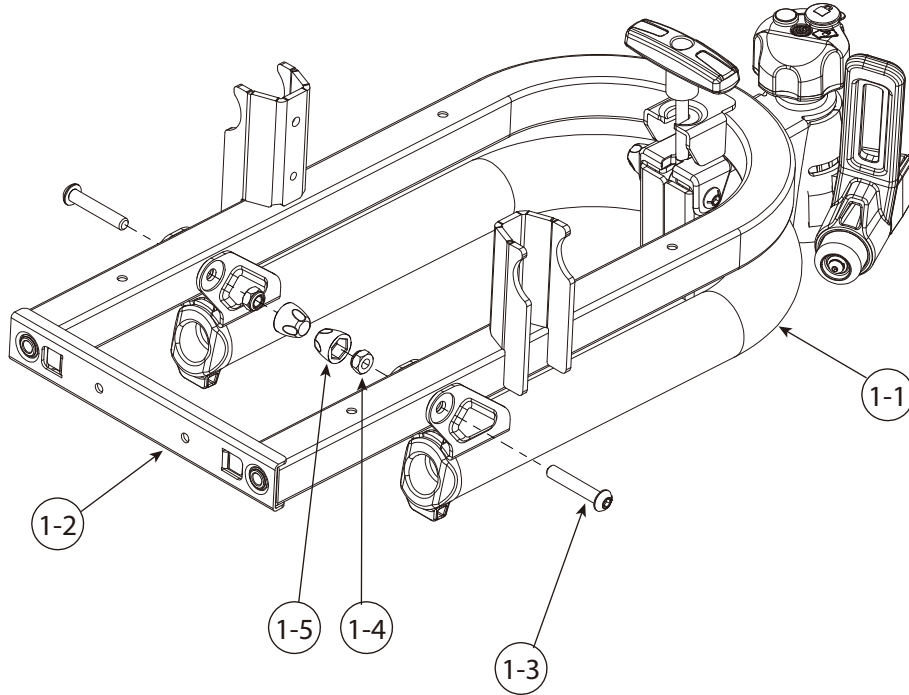


SPARE PARTS



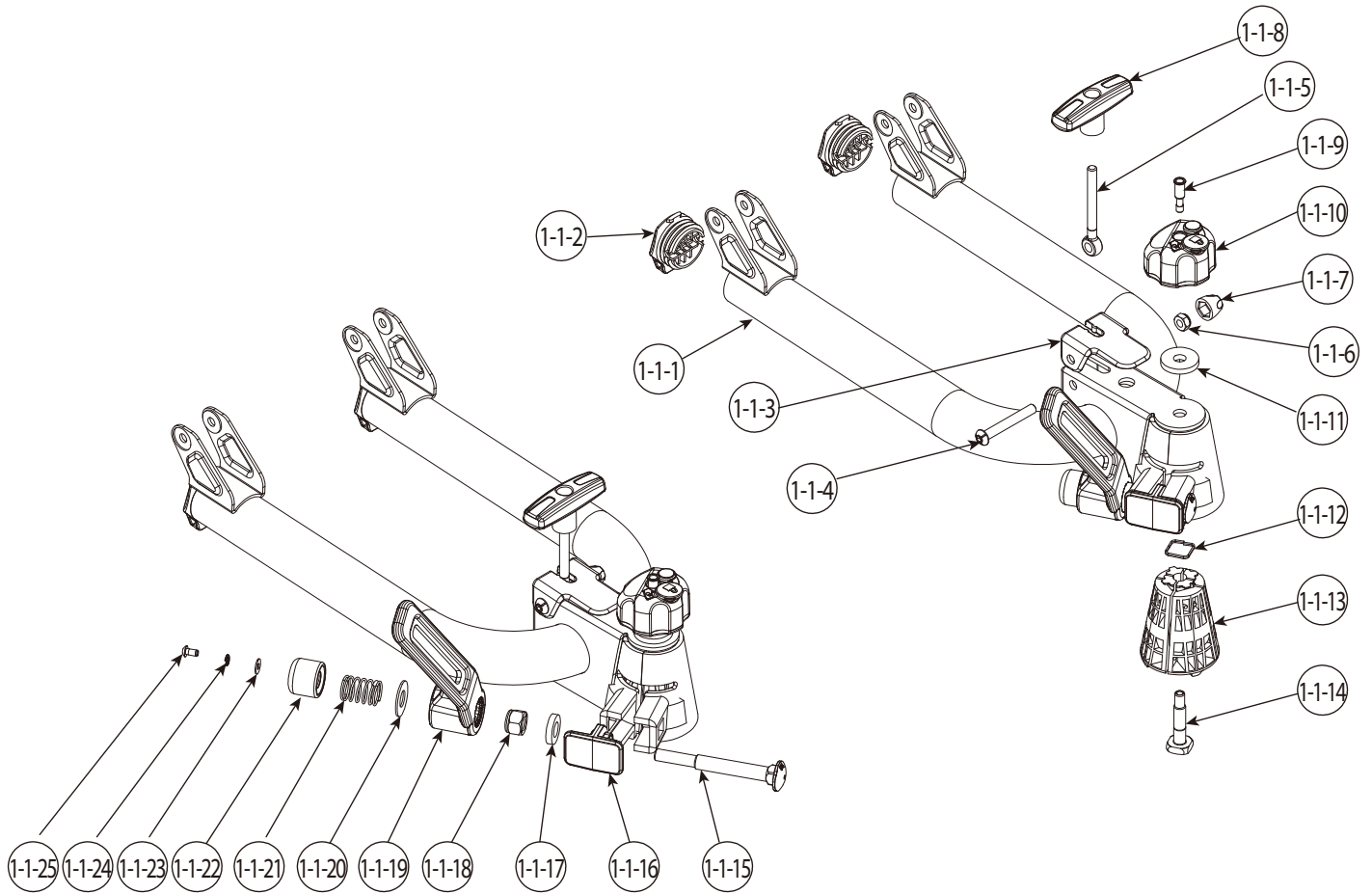
PART	DESCRIPTION	PART NUMBER	QTY.	PART	DESCRIPTION	PART NUMBER	QTY.
1	Foot assembly		1	16	Light assembly	3505-00037-99C	1
2	Platform assembly		1	17	Screw M6x25mm	140-1106-005-04D	2
3	Top frame assembly		1	18	Spring washer M6	142-2006-001-04D	2
4	Screw M6x70mm	140-1106-028-04D	4	19	C-cable clip	130-00755-01C	1
5	Washer Ø6.5xØ13	142-1065-003-04D	10	20	Safety strap	3522-00072-03C-01	1
6	Wheel support tube cover	130-00738-01C	2	21	Key	147-01905-99D	2
7	Nylock nut M6	141-0106-001-04D	4	22	T-wrench	132-00022-05C	1
8	Plastic bushing	130-00814-01C	2	23	Allen key(4.0)	144-00009-06D	1
9	Can lever assembly	3509-00372-16C	2	24	Allen key(5.0)	144-00003-06D	1
10	Steel cap	3209-00373-04D	2	25			
11	Plastic washer	130-00035-01C	2	26			
12	Washer Ø6.5xØ16	142-1065-004-04D	2	27			
13	Knob M6	3503-00088-01C	2	28			
14	Nut M6	141-2606-001-04D	2	29			
15	Screw Ø4.8x14	140-1783-002-04D	2	30			

SPARE PARTS



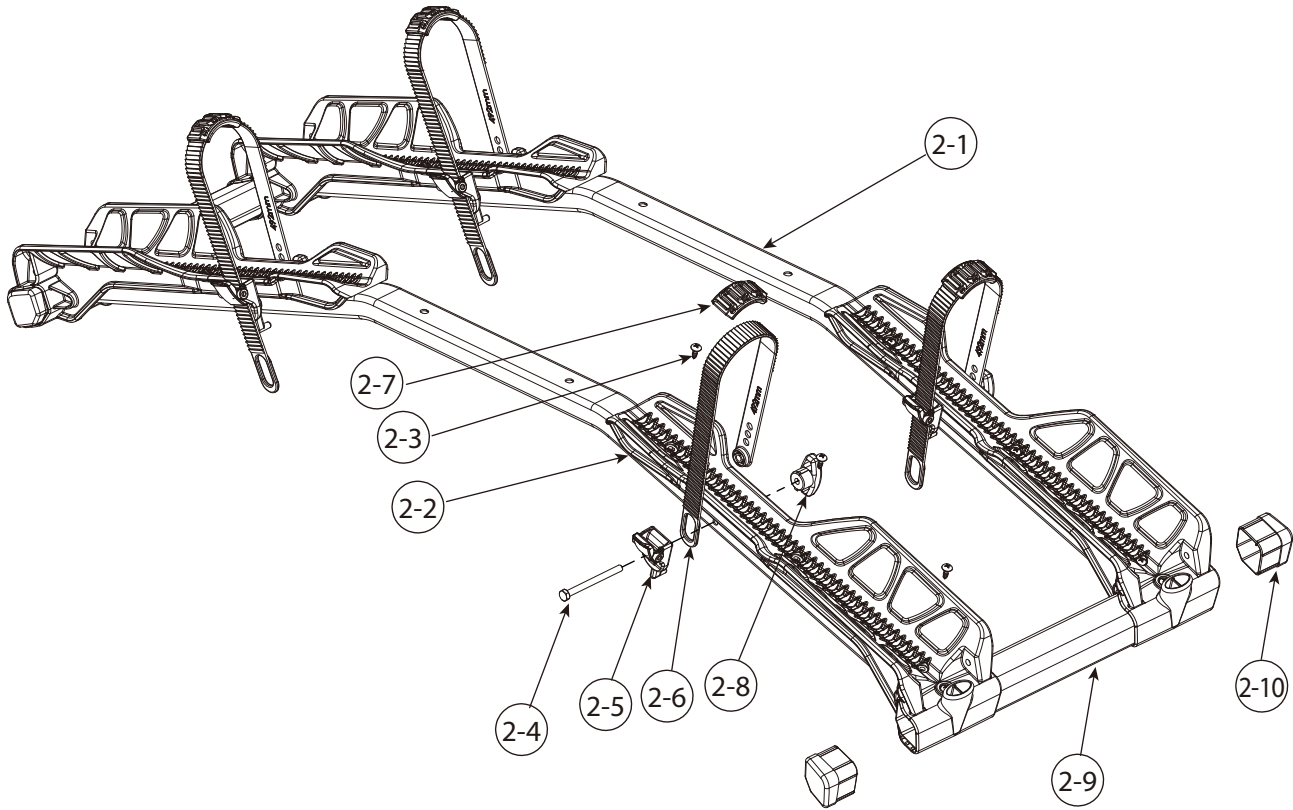
PART	DESCRIPTION	PART NUMBER	QTY.	PART	DESCRIPTION	PART NUMBER	QTY.
1-1	Foot assembly		1				
1-2	Welding assembly		1				
1-3	Screw M8x45mm	140-1108-016-04D	2				
1-4	Nylock nut M8	141-0108-001-04D	2				
1-5	Screw cap M8	130-00459-01C	2				
1-6							
1-7							
1-8							
1-9							
1-10							
1-11							
1-12							
1-13							
1-14							
1-15							
1-16							
1-17							
1-18							
1-19							
1-20							

SPARE PARTS



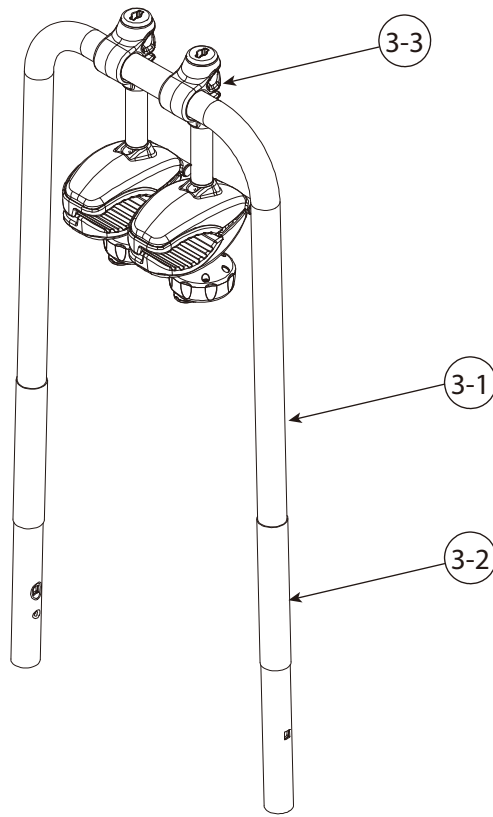
PART	DESCRIPTION	PART NUMBER	QTY.	PART	DESCRIPTION	PART NUMBER	QTY.
1-1-1	Welding assembly	3205-00185-04P	1	1-1-21	Spring	145-00034-13D	1
1-1-2	End cap	130-00705-01C	2	1-1-22	Bushing	130-00728-01C	1
1-1-3	Plastic cap	130-00789-16C	1	1-1-23	Washer Ø5.3xØ12.8	142-1053-001-04D	1
1-1-4	Screw M8x60mm	140-1108-012-04D	1	1-1-24	Spring washer M5	142-2005-001-04D	1
1-1-5	Eye-bolt M8x80mm	140-2008-001-04D	1	1-1-25	Screw M5x10mm	140-1105-004-04D	1
1-1-6	Nylock nut M8	130-00459-01C	1				
1-1-7	Screw cap M8	141-0108-001-04D	1				
1-1-8	T-knob	3503-00126-16C	1				
1-1-9	Retainer	3509-00332-99C	1				
1-1-10	Locking knob M10	3503-00127-99C	1				
1-1-11	Washer Ø10.5xØ32	142-1105-003-04D	1				
1-1-12	Square spring	145-00055-13D	1				
1-1-13	Conical clamps	118-00146-00	4				
1-1-14	Square head bolt M10x50mm	140-0510-002-04D	1				
1-1-15	Carriage bolt M12x105mm	140-0112-008-04D	1				
1-1-16	Conic protector	130-00609-01C	1				
1-1-17	Washer Ø13xØ25	142-1130-005-04D	1				
1-1-18	Nylock nut M12	141-0112-003-04D	1				
1-1-19	Intergrated spanner	3209-00369-16C	1				
1-1-20	Washer Ø14.2xØ30	142-1141-001-04D	1				

SPARE PARTS



PART	DESCRIPTION	PART NUMBER	QTY.	PART	DESCRIPTION	PART NUMBER	QTY.
2-1	Wheel support tube	3202-00127-44P	2				
2-2	Wheel suport	130-00735-01C	4				
2-3	Screw Ø4.8x14	140-1783-002-04D	16				
2-4	Hex bolt M6x70mm	140-0306-041-04D	4				
2-5	Ratchet for wheel strap	3509-00318-16C	4				
2-6	Wheel strap 492mm	130-00687-01C	4				
2-7	Strap pad	130-00637-16C	4				
2-8	T-knob M6	3509-00319-01C	4				
2-9	Side tube	3420-00042-44P	2				
2-10	End cap	130-00737-01C	4				
2-11							
2-12							
2-13							
2-14							
2-15							
2-16							
2-17							
2-18							
2-19							
2-20							

SPARE PARTS



PART	DESCRIPTION	PART NUMBER	QTY.	PART	DESCRIPTION	PART NUMBER	QTY.
3-1	Vertical tube	3201-00415-44P	1				
3-2	PVC corer	131-00043-01C	2				
3-3	Clamp assembly		2				
3-4							
3-5							
3-6							
3-7							
3-8							
3-9							
3-10							
3-11							
3-12							
3-13							
3-14							
3-15							
3-16							
3-17							
3-18							
3-19							
3-20							

